



INSTALLATION INSTRUCTIONS 74106 DISCONNECT SWITCH

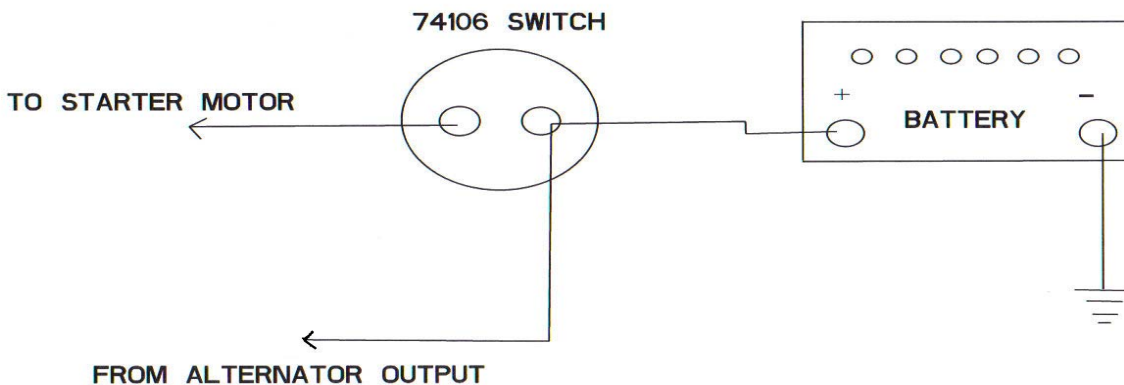
Page 1 of 2

The recommended installation procedure of this battery disconnect switch is as follows:

1. Locate desired installation area (make sure there is plenty of room behind mounting area).
2. Using supplied template drill holes and install switch
3. Follow the wiring diagram for proper hookup

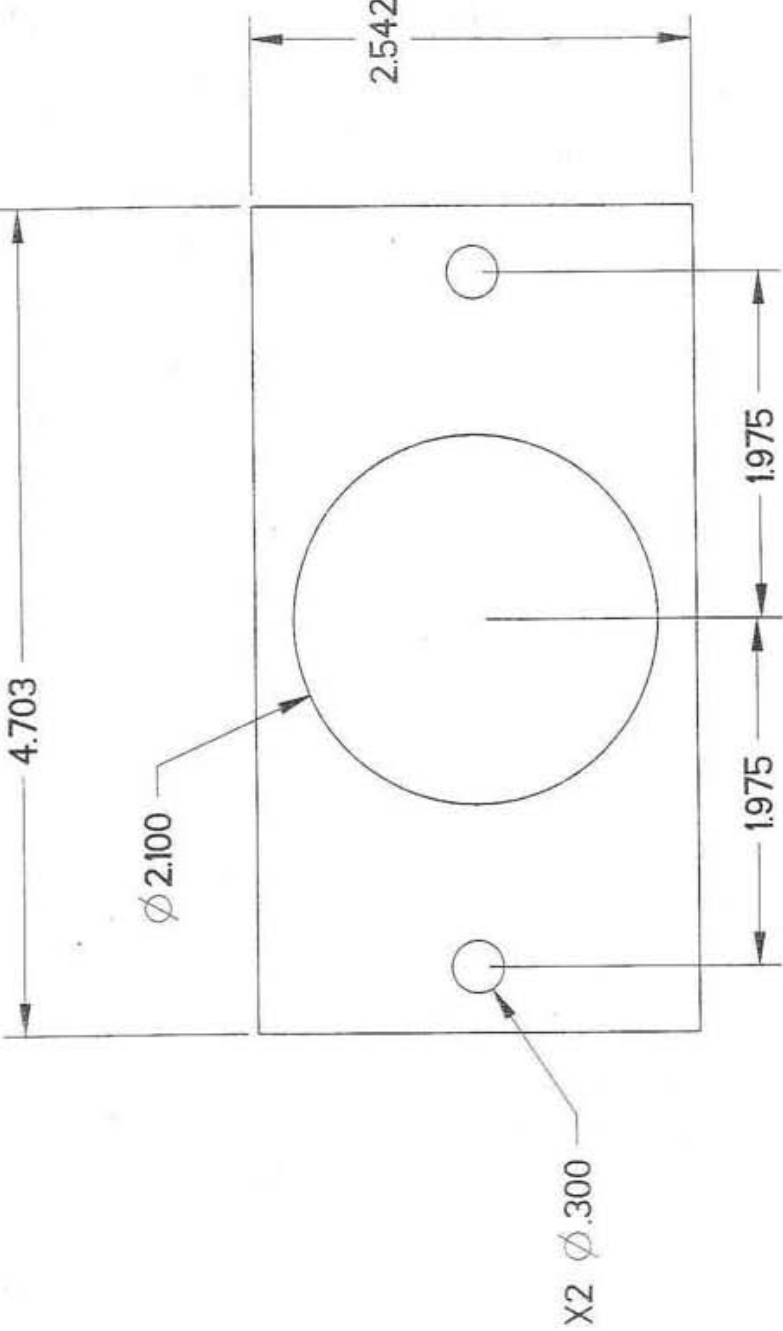
NOTE: In order for vehicles with alternators to meet NHRA regulations, the alternator output wire must be wired to the battery side of the disconnect switch. On racecars and streetcars with modified wiring harness, we recommend the use of a single wire alternator.

NOTE: Be sure to clearly mark near the switch “**PUSH = OFF**”. This must be clearly visible!



**For Technical Assistance, Call Moroso's Tech Line at
(203) 458-0542, 458-0546 8:30am – 5:00pm Eastern Time**

MOROSO PERFORMANCE PRODUCTS, INC
80 CARTER DR • GUILFORD, CT 06437-2116
Phone: (203) 453-6571 • Fax: (203) 453-6906



SCALE 1:00

DRILL TEMPLATE 74106 , KEEP SCALE 1:00

Page 2 of 2

