



## Parts List

- (1) TANK BODY
- (1) BILLET CLAMP
- (1) BALL VALVE
- (1) 90 DEGREE DRAIN
- (1) STAINLESS STEEL MOUNTING BRACKET
- (1) 90 DEGREE 3/8" BARBED FITTINGS
- (1) 90 DEGREE 1/2" BARBED FITTINGS
- (1) LENGTH OF 1/2" HOSE
- (1) LENGTH OF 3/8" HOSE
- (1) DRAIN CAP
- (2) 1/4 X 20 SHCS X 5/8
- (1) 1/4 X 20 SHCS X 1
- (1) 5/16X18 NYLOCK NUT
- (1) 5/16X18X1 HHCS
- (1) 5/16 FLAT WASHER
- (1) HOSE CLAMP

For Technical Assistance, call Moroso's Tech Line  
(203)-458-0542, 8:30am-5:00pm Eastern Time  
MOROSO PERFORMANCE PRODUCTS, INC.

80 CARTER DRIVE  
GUILFORD, CT 06437

[www.moroso.com](http://www.moroso.com)



Step 1: Remove engine cover.



Step 2: Locate PCV line.

For Technical Assistance, call Moroso's Tech Line  
(203)-458-0542, 8:30am-5:00pm Eastern Time  
MOROSO PERFORMANCE PRODUCTS, INC.

80 CARTER DRIVE  
GUILFORD, CT 06437

[www.moroso.com](http://www.moroso.com)



Step 3: Remove PCV line from vehicle.



For Technical Assistance, call Moroso's Tech Line  
(203)-458-0542, 8:30am-5:00pm Eastern Time  
MOROSO PERFORMANCE PRODUCTS, INC.

80 CARTER DRIVE  
GUILFORD, CT 06437

[www.moroso.com](http://www.moroso.com)



Step 4: Using 3/8" length of hose install over PCV valve.



Step 5: Using 1/2" length of hose and hose clamp install over intake nipple.

For Technical Assistance, call Moroso's Tech Line  
(203)-458-0542, 8:30am-5:00pm Eastern Time  
MOROSO PERFORMANCE PRODUCTS, INC.

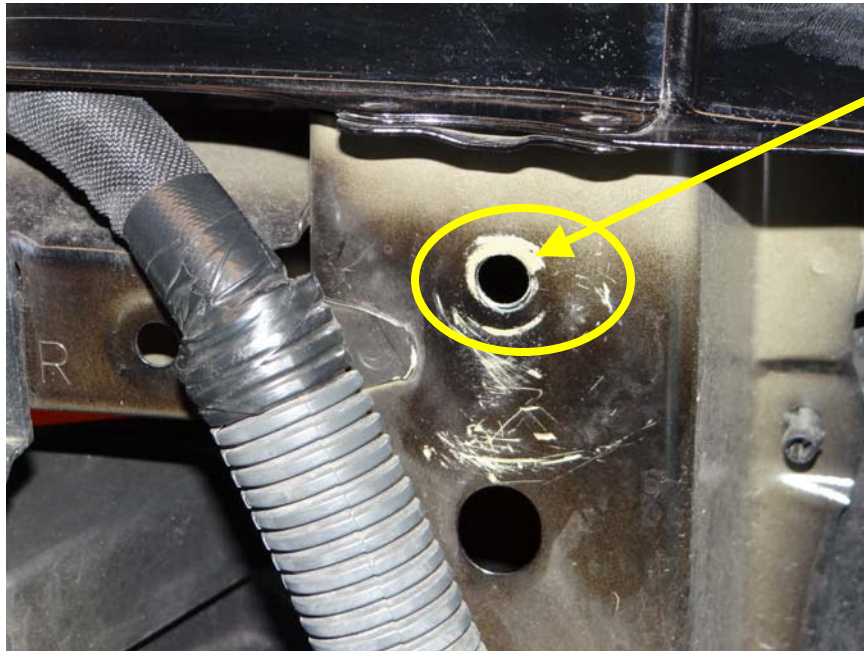
80 CARTER DRIVE  
GUILFORD, CT 06437

[www.moroso.com](http://www.moroso.com)





Step 6: Route lines previously installed over to passengers side of vehicle as shown.



Step 7: Locate hole shown on passenger's side front of radiator support.

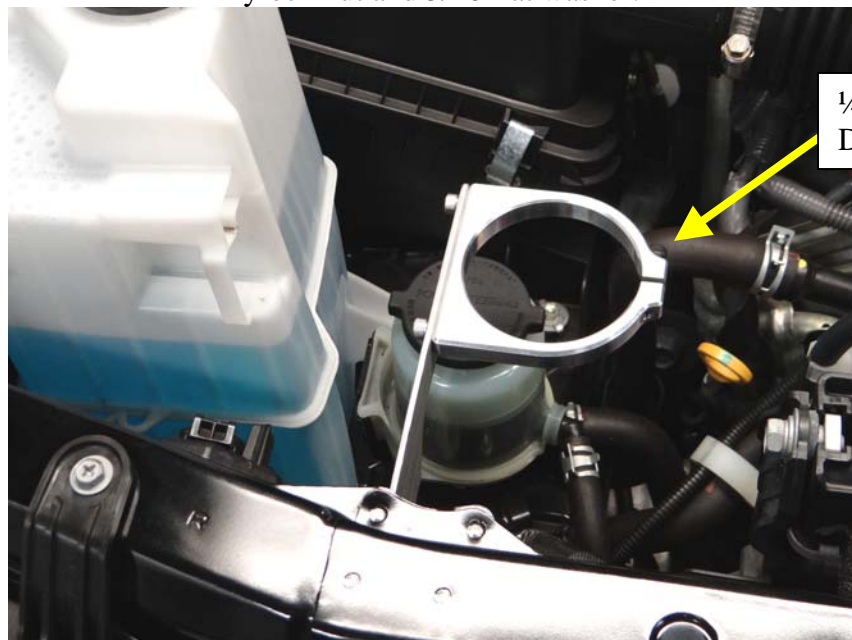
For Technical Assistance, call Moroso's Tech Line  
(203)-458-0542, 8:30am-5:00pm Eastern Time  
MOROSO PERFORMANCE PRODUCTS, INC.

80 CARTER DRIVE  
GUILFORD, CT 06437

[www.moroso.com](http://www.moroso.com)



Step 8: Install stainless steel mounting bracket as shown using 5/16-18x1 HHCS, 5/16-18 nylock nut and 5/16 flat washer.

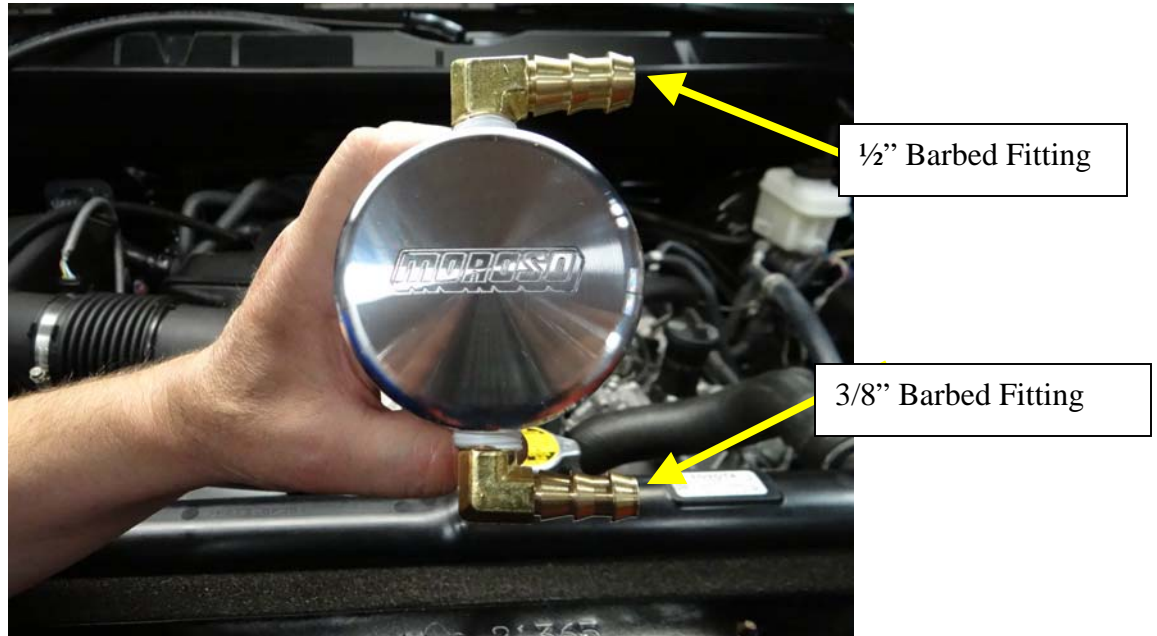


Step 9: Assemble billet clamp to stainless steel mounting bracket using (2) 1/4-20x5/8 SHCS, install 1/4-20x1 SHCS in billet clamp (Do not tighten and note orientation)

For Technical Assistance, call Moroso's Tech Line  
(203)-458-0542, 8:30am-5:00pm Eastern Time  
MOROSO PERFORMANCE PRODUCTS, INC.

80 CARTER DRIVE  
GUILFORD, CT 06437

[www.moroso.com](http://www.moroso.com)



Step 10: Assemble Air Oil Separator as shown using Teflon Tape on all Fittings.



For Technical Assistance, call Moroso's Tech Line  
(203)-458-0542, 8:30am-5:00pm Eastern Time  
MOROSO PERFORMANCE PRODUCTS, INC.

80 CARTER DRIVE  
GUILFORD, CT 06437

[www.moroso.com](http://www.moroso.com)





Step 11: Insert Air Oil Separator into billet clamp.



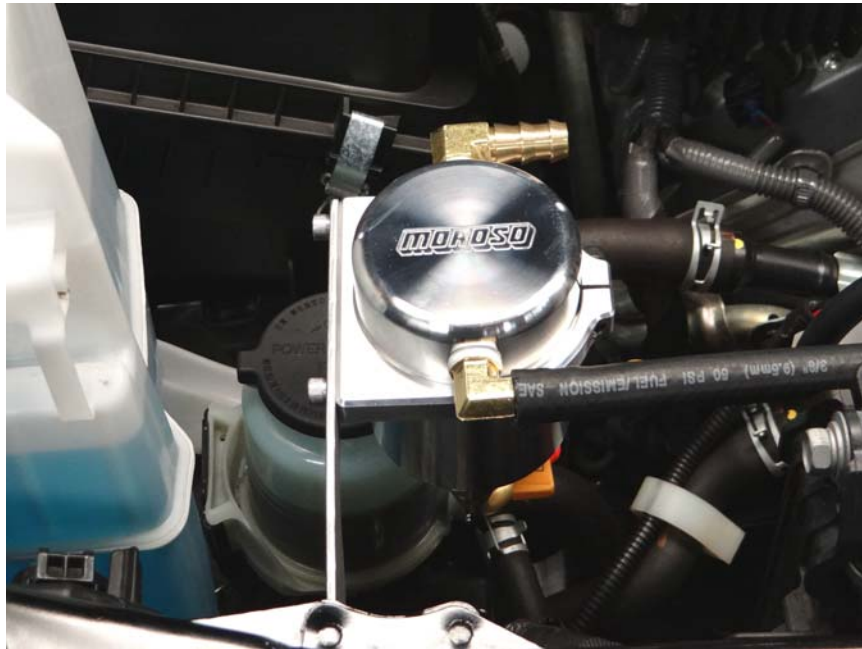
Step 12: Orientate Air Oil Separator as shown and tighten.

For Technical Assistance, call Moroso's Tech Line  
(203)-458-0542, 8:30am-5:00pm Eastern Time  
MOROSO PERFORMANCE PRODUCTS, INC.

80 CARTER DRIVE  
GUILFORD, CT 06437

[www.moroso.com](http://www.moroso.com)





Step 13: Route 3/8" hose to Air Oil Separator, trim hose if needed and install.



Step 14: Route 1/2" hose to Air Oil Separator, trim hose if needed and install.

For Technical Assistance, call Moroso's Tech Line  
(203)-458-0542, 8:30am-5:00pm Eastern Time  
MOROSO PERFORMANCE PRODUCTS, INC.

80 CARTER DRIVE  
GUILFORD, CT 06437

[www.moroso.com](http://www.moroso.com)



Step 15: Re-install engine cover.



**Installation Complete**

For Technical Assistance, call Moroso's Tech Line  
(203)-458-0542, 8:30am-5:00pm Eastern Time  
MOROSO PERFORMANCE PRODUCTS, INC.

80 CARTER DRIVE  
GUILFORD, CT 06437

[www.moroso.com](http://www.moroso.com)



**Draining of Air Oil Separator is needed; this will depend on driving conditions (i.e.) normal day to day driving check every 1,000 miles until a baseline is established. A good baseline is to drain the Air Oil Separator when it is about HALF full. This will vary with temperatures (cold winters vs. hot summers). For track usage Air Oil Separator will need to be drained after every outing.**

**There are several different methods to draining Air Oil Separator. The first and simplest method is to place a cup or MOROSO part # 65805 under drain elbow and open ball valve, once draining is complete close ball valve. The second method is to run a length of ½” hose from elbow to under carriage of vehicle and place drain pan under vehicle at this time open ball valve, when draining is complete close ball valve. This hose may also be permanently installed for future draining.**

For Technical Assistance, call Moroso's Tech Line  
(203)-458-0542, 8:30am-5:00pm Eastern Time  
MOROSO PERFORMANCE PRODUCTS, INC.  
80 CARTER DRIVE  
GUILFORD, CT 06437  
[www.moroso.com](http://www.moroso.com)